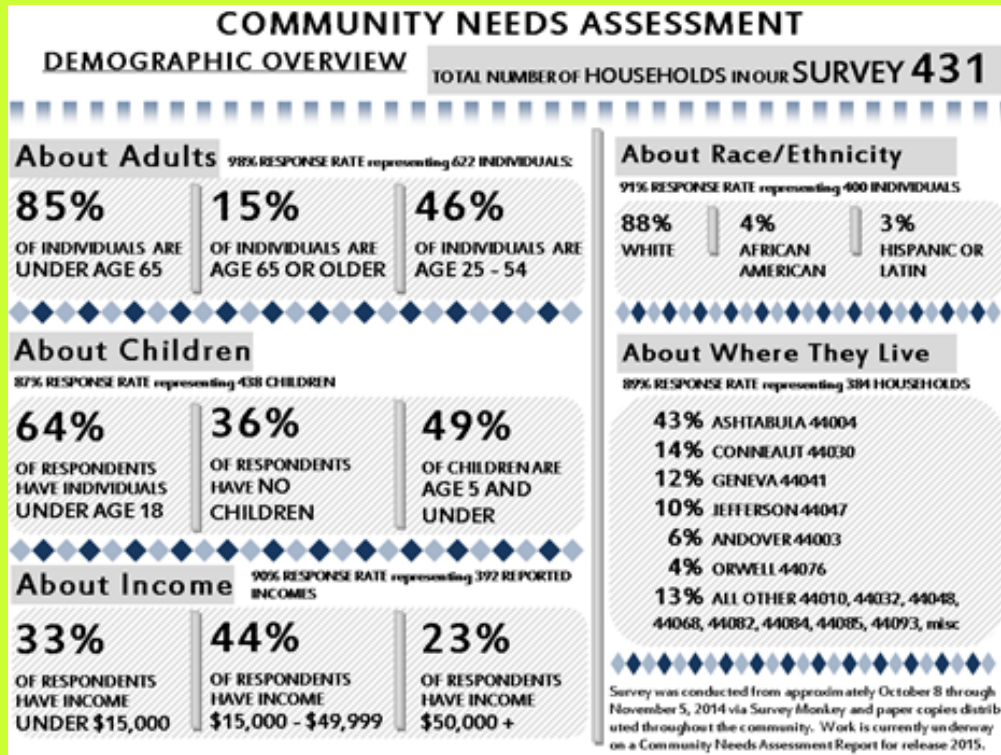


Ashtabula County Community Action Agency Community Needs Assessment 2015- Summary

ABOUT THE SURVEY

To ensure that we had comprehensive data, key topic areas important to thriving communities and related to ACCAA services specifically were identified to survey. The topic areas were: Education, Employment, Transportation, Health Care/Nutrition, Child Care, Food, Housing/ Shelter, Substance Abuse/Alcohol/Drug, Family, Community, Financial, and Utilities/Energy. The survey tool was available online through Survey Monkey and in hard copy from October 8 through November 5, 2014. We received 431 responses, the results and a scan of the environment that are summarized here. The full Community Needs Assessment Report will be posted on our website www.accaa.org.



OVERALL RESULTS

- Respondents indicated the three (3) most utilized ACCAA programs are: HEAP/PIPP (Utility assistance)- 57%, WIC- 55%, and 2-1-1 Information & Referral- 37%
- In the last 12 months, respondents reported needing the most help with: Food 43%, Utility Assistance 41%, and Transportation 16%.
- At the time of the survey, respondents were receiving the following services: HEAP/PIPP (Utility assistance) 40%, Supplemental Nutrition Assistance Program (SNAP) 25%, and Earned Income Tax Credit (EITC) 10%.
- Majority of respondents were age 25-54 (65%); 1/3 had no children; and of those with children the largest age group were children of age 6-12 years old.

COMPARISON

In our most recent survey, the question asked “what is the biggest problem in your community.” In the last survey we provided a list of important issues for the respondents to rank. The answers from both surveys are represented in the chart below:

2012

Unemployment

Crime

Access to Healthcare

Housing

Drug Abuse Prevention

2015

Drugs/Drug Abuse

Jobs/Unemployment

Crime/Violence/Theft

Apathy/Erosion of Values

Poverty

Based on this comparison, the concern with Drugs and Drug Abuse has become the most critical problem within our communities.

COMPARISON 2012 to 2015

In our most recent survey, the question asked “what is the biggest problem in your community,” in the last survey we provided a list of important issues for the respondents to rank. The answers from both surveys are represented in the chart above. Comparing the new results to the top three results of 2012, “Drugs and Drug Abuse” moved up to number 1 (up from 4th as Drug Abuse Prevention) bumping Jobs/Employment/ Unemployment from number 1 to number 2; Crime moved from number 2 to number 3. These results, Drugs and Drug Abuse, Lack of Jobs/Unemployment, and Crime, echo the anecdotal observations regarding the biggest problems/issues facing the community.

Did You Know?



55% of survey respondents revealed that unexpected expenses were difficult to manage and the ability to set aside emergency funds was not likely.

ECONOMIC WELL-BEING



33% income under \$15,000



50% has a checking account



Less than 1/3 had a savings account



1 in 7 has a credit card

In the last 12 months, respondents reported needing the most help with:



43% FOOD

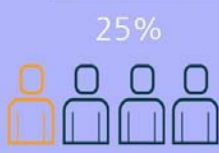


41% UTILITY ASSISTANCE



16% TRANSPORTATION

Did You Know?



1 in 4 (25.2%) of respondents said that within the last month they have visited a food pantry, distribution, or emergency meal site for a hot meal or bag of groceries

HEALTH

Food insecurity is defined in the report Hunger in Ohio 2014, as "being without reliable access to a sufficient quantity of affordable, nutritious food at some point". The Food Insecurity Rate for Ashtabula County is 16.1% with the estimated number food insecure individuals at 16,300. The Feeding America website notes that food insecure people are not necessarily food insecure all the time, but suggests that a household may make "trade-offs between important basic needs such as housing or medical bills, and purchasing nutritionally adequate foods".

Food Insecurity



CATEGORY RESULTS

The key topic areas in the assessment were organized around 4 basic categories: Economic Well-Being, Education, Health, and Family and Community. Here are a few key points in each of these categories derived from the survey...

Economic Well-Being

- For more than half of respondents (55%) unexpected expenses were difficult to manage and the ability to set aside emergency savings was not likely.
- For households with incomes under \$15,000/year- only about half had a checking account and debit card; less than a third had a savings account; and only about 1 out of 7 has a credit card.

Education

- One in four respondents is a college graduate, a little more than ¼ had some college or vocational training.
- Over 1/3 read to their children daily and almost 3/4 report using their local library.
- In addition to the 292 children served through the seven (7) Licensed Head Start Centers, there are 27 Licensed Child Care Centers in the County with the capacity to serve over 1,936 children.

Health

- Though most (94%) reported having access to food on a daily basis; one in eight (13%) utilized local hunger centers for food assistance of which 44% are children and seniors.
- Most (91%) report that they are able to access care or see a doctor when necessary.
- Reinstatement of Medical Assessment program for seniors was noted as a need since it is often the only time some seniors see a medical professional.

Family and Community

- Crime was listed as the third most significant problem in the community, while 67% rated safety in their community "good" or "very good".
- The majority rated "Shopping" options in their community "neither good or bad", "poor", and "very poor".
- Budgeting skills and financial planning were the most desired topics to help people become more self-sufficient. Respondents were largely non-committal about attending workshops, however "interest in the topic" was cited as the most influential factor for attendance and their training preference was "hands-on".
- With regard to Access to Information in the Home, more than 3/4 had a computer in the home and have internet access; 69% have a smart phone.
- "Word of Mouth" was cited by 3/4 as the method for finding out about assistance, programs, events and activities within the community; followed by the "newspaper" and "social media".

WHY DO A COMMUNITY NEEDS ASSESSMENT ?

To accomplish our mission we must provide programs that address verified and urgent local needs and fill gaps in service or resources to meet those needs. A periodic analysis of community-wide conditions is required and conducted by ACCAA at least every three years, to identify those existing and emergent community needs.

The Community Needs Assessment process was conducted in the fall of 2014. Respondents included customers/clients of our ACCAA programs, the general public during local health fairs/community events, social and human service providers, governmental, local libraries, Ohio Means Jobs, and service organizations. As well as through our ACCAA Facebook page and website.

Drug Abuse in Ashtabula County

Drugs and Drug Abuse was the #1 cited Community Issue according to respondents to our survey.



Education in Ashtabula County

Educational Attainment in Ashtabula County

	Survey Results	US Census Data, American Community Survey
Less than High School Diploma	8%	15.39%
High School Diploma	33%	45.6%
Some Vocational Training or College	29%	19.9%
College Degree	24%	19.2%

Post Secondary Training in Ashtabula County

- ACCAA Action in Motion
- American Red Cross: Ashtabula County
- A-Tech: Technical and Career Campus
- Kent State University—Ashtabula Campus
- Rae-Ann Skilled Nursing and Rehabilitation Center